

10-POINT SYNC AUDIT

MDM Security Review

PRESENTED BY
DeviceSolutions.ai

AUDIT POINT 1

Ensuring Device Resilience

Devices must be able to withstand extreme conditions, particularly **120°F attic temperatures**. High temperatures can lead to significant failures, impacting performance and reliability. Ensuring that devices are tested for thermal durability is critical to prevent field failures and to maintain operational efficiency in challenging environments.

Conducting thermal testing is a fundamental step to determine how devices react under high heat conditions. Regular assessments should be scheduled to ensure that all units are compliant with environmental standards. This not only prolongs device lifespan but also secures an efficient HVAC fleet operation, mitigating potential risks related to device failures.



AUDIT POINT 2

Understanding Device Performance

Acceptable failure rates for devices must remain **below 4%** to ensure reliability and functionality in operations. Exceeding this threshold can lead to **operational inefficiencies** and increased costs. Continuous monitoring of device performance is crucial to identify potential issues before they escalate into significant problems, thereby maintaining fleet resilience.

Immediate attention is necessary when failure rates exceed 4%, which indicates a potential risk to system integrity. Implementing robust device monitoring solutions can help track performance metrics in real-time and facilitate proactive maintenance. This approach not only mitigates risk but also enhances operational **efficiency and reliability** across the fleet.



AUDIT POINT 3

Critical Visibility Measures

Ensuring that screens maintain **optimal visibility** in direct sunlight is essential for effective operation. Poor visibility can lead to user frustration and errors, impacting overall productivity. Regular assessments should be conducted to evaluate outdoor display performance against varying light conditions, ensuring devices remain functional in challenging environments.

Upgrading to **high-brightness displays** can significantly enhance outdoor screen visibility. These displays are designed to combat glare and maintain clarity in bright sunlight, reducing the risk of visibility-related incidents. Investing in superior display technology not only improves user experience but also ensures consistent performance across different operational scenarios.



DEAD ZONE PLANNING

Connectivity Risk Assessment

Planning for areas with **limited or no connectivity** is crucial for maintaining operational efficiency. Failure to address these dead zones can lead to significant **data loss**, impacting overall performance. To mitigate these risks, a comprehensive strategy for offline data storage should be established to ensure continuous functionality in challenging environments.

Implementing offline data storage solutions can drastically reduce the likelihood of data loss during connectivity outages. This proactive approach not only safeguards critical information but also enhances the reliability of device operations in remote areas. Ensuring that all team members are aware of these protocols will further strengthen the resilience of the network.



AUDIT POINT 5

Seamless Connectivity Assurance

Devices must seamlessly switch between carriers to maintain **consistent connectivity**. A failure to do so can lead to dropped connections, impacting communication and data transfer. Testing carrier switching protocols is crucial to ensure that devices can operate efficiently across various network environments and conditions, preserving operational integrity.

Risk indicators show that dropped connections can occur during transitions between networks. A medium risk level signifies a need for improvement in this area. Remediation steps include thorough testing of carrier switching protocols, ensuring all devices can handle transitions smoothly and maintain uninterrupted service, which is vital for fleet functionality.

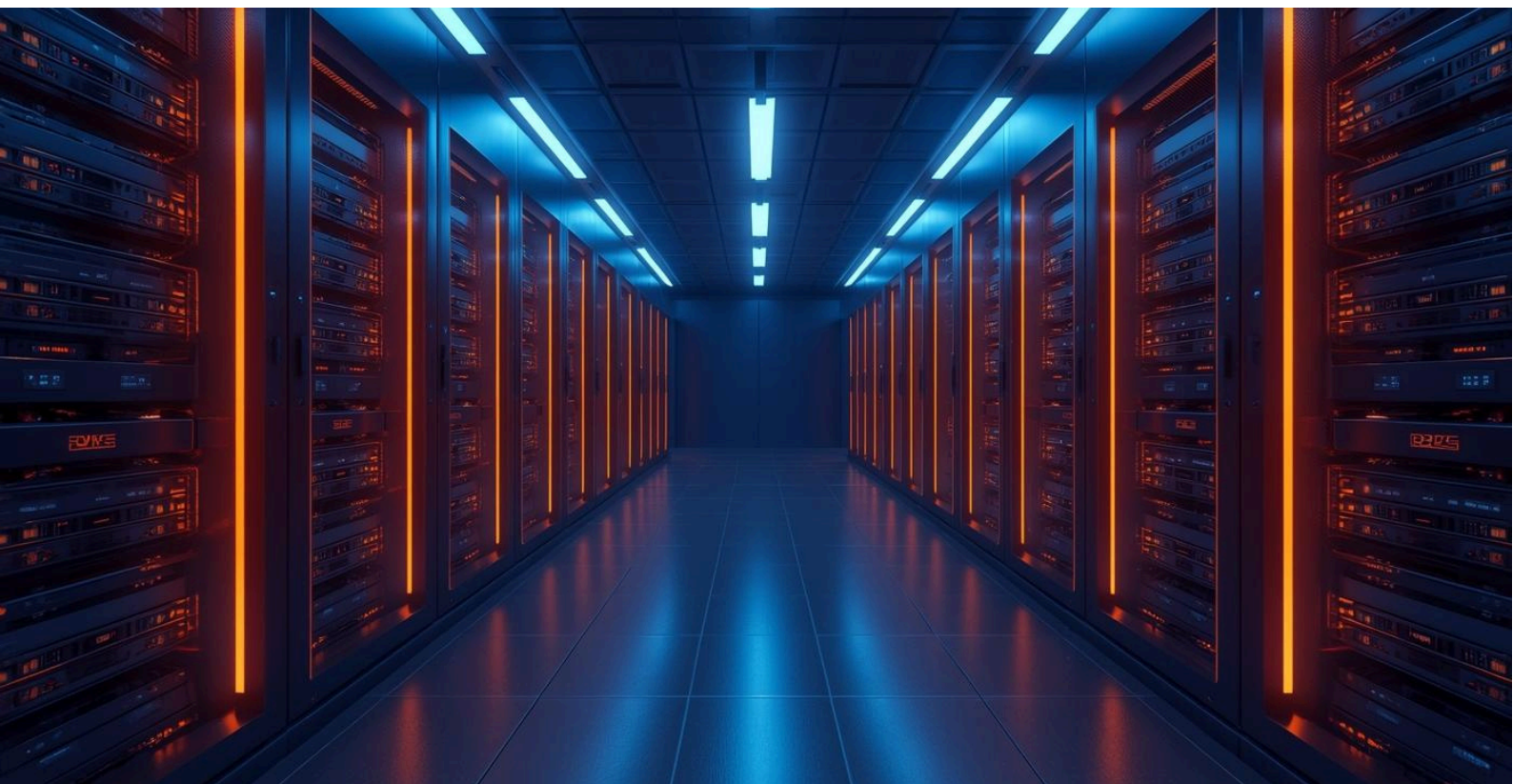


SYNC INCIDENTS

Data Loss Prevention

To **minimize data loss** during sync failures, it is crucial to identify frequent sync errors that can affect operational efficiency. High-risk scenarios can lead to **significant disruptions** in data availability and operational continuity. Implementing effective strategies to address these issues is essential for maintaining data integrity and reliability across devices.

A robust sync error handling framework will help detect and rectify issues promptly, ensuring that data remains consistent and accessible. This may involve incorporating automated retries, error logging, and notifications to relevant personnel, facilitating faster resolutions and **reducing downtime**. Proper training for staff on troubleshooting can further enhance resilience against sync issues.

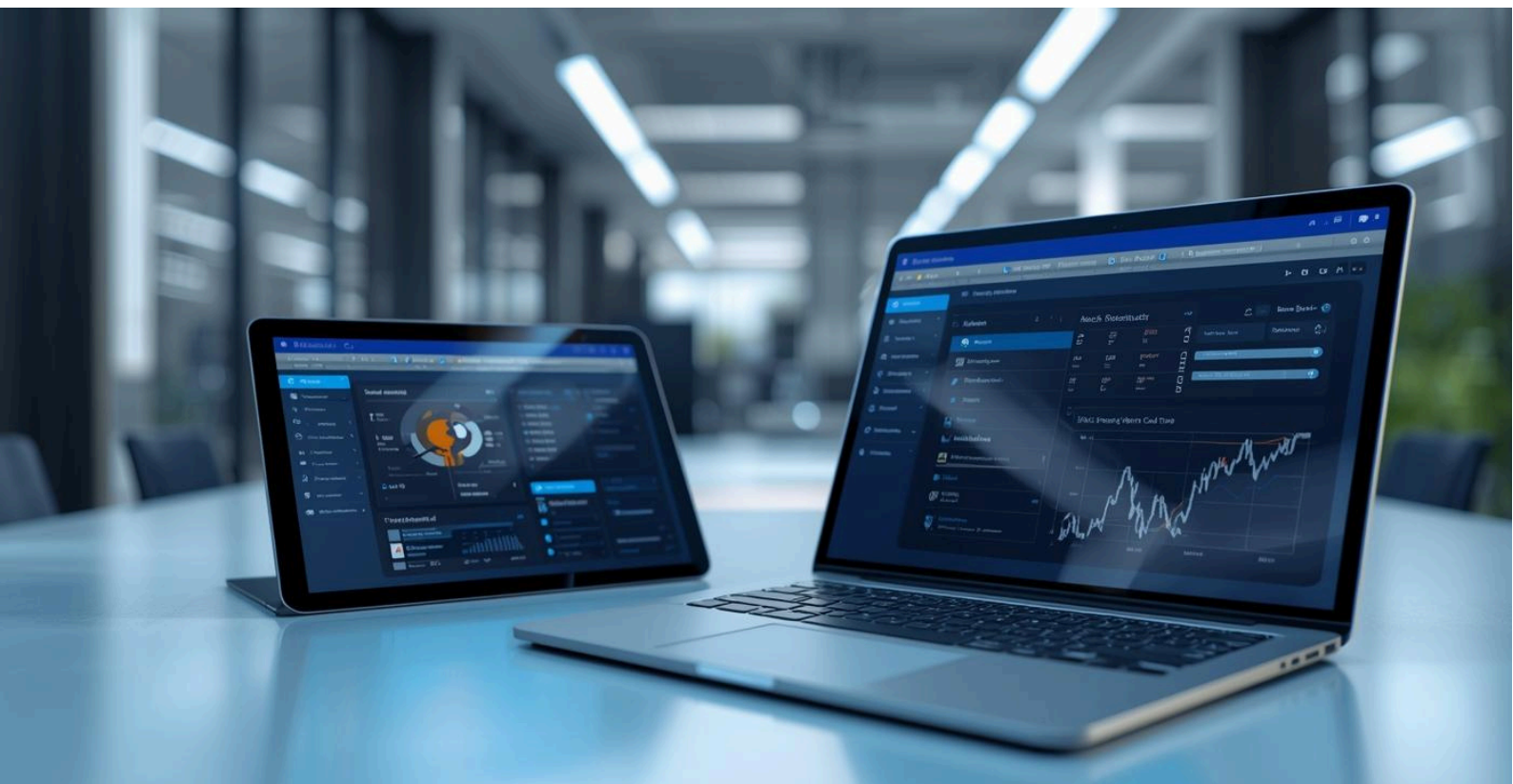


AUDIT POINT 7

5-Minute Device Provisioning

Provisioning devices efficiently is crucial for maintaining operational **efficiency** within the fleet. Slow provisioning times can hinder the deployment of essential devices, impacting productivity and connectivity. Ensuring a streamlined process through effective configuration of Mobile Device Management (MDM) systems will enhance device readiness and user experience, while mitigating potential delays in service.

To achieve optimal provisioning times, it is vital to regularly review and **optimize** MDM configurations. This includes ensuring that all device settings are correctly defined and that batch provisioning methods are utilized. By streamlining these processes, the organization can achieve faster deployment times and ensure that devices are ready for immediate use in the field.



AUDIT POINT 8

Ensure Accurate Tracking

Ensuring **GPS lock** is crucial for effective location tracking in our devices. Regular failures can lead to **significant operational risks**, including unauthorized location access and data inaccuracies. A robust enforcement strategy through MDM is needed to maintain accurate and reliable GPS functionality across all devices in our fleet.

To mitigate the risk associated with GPS lock failures, it is essential to **enforce GPS settings** through Mobile Device Management (MDM). This includes configuring device settings to automatically ensure GPS functionalities are active and monitored. By implementing stringent MDM protocols, we can minimize the likelihood of failures and enhance our overall operational security.

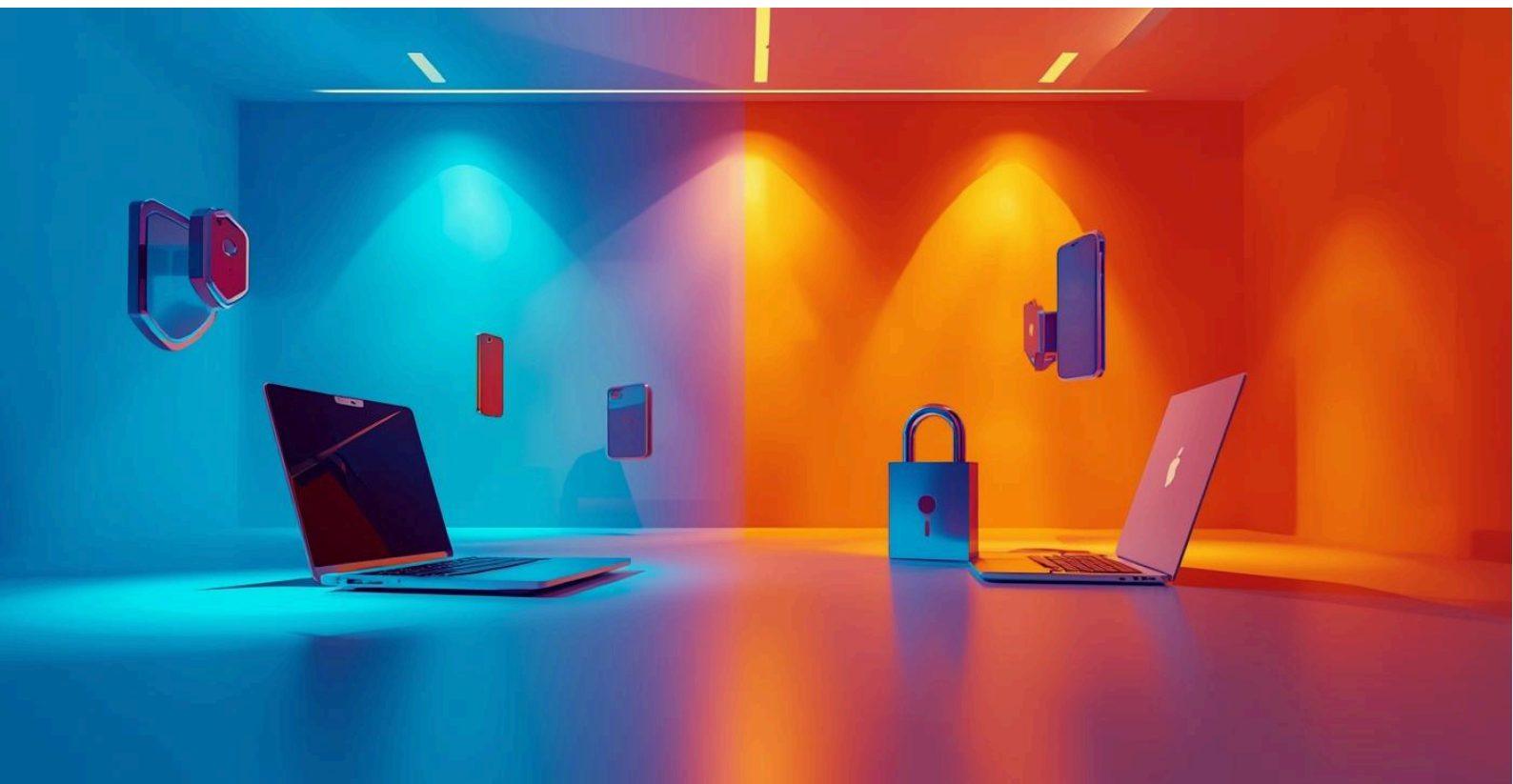


MESSAGING APP RISKS

Control Unapproved Apps

Uncontrolled use of messaging apps poses serious **security threats** to our communication. Unsecured channels can lead to **data breaches** and unauthorized access to sensitive information. It is crucial to monitor and manage app usage effectively to ensure compliance with company policies and maintain data integrity across our devices.

To mitigate these risks, **blocking unauthorized messaging apps** is essential. Implementing strict controls and monitoring tools will help ensure secure communication channels are used. Regular audits and employee training on the dangers of off-the-books apps can further enhance our security posture, safeguarding data from potential leaks and vulnerabilities.



AUDIT POINT 10

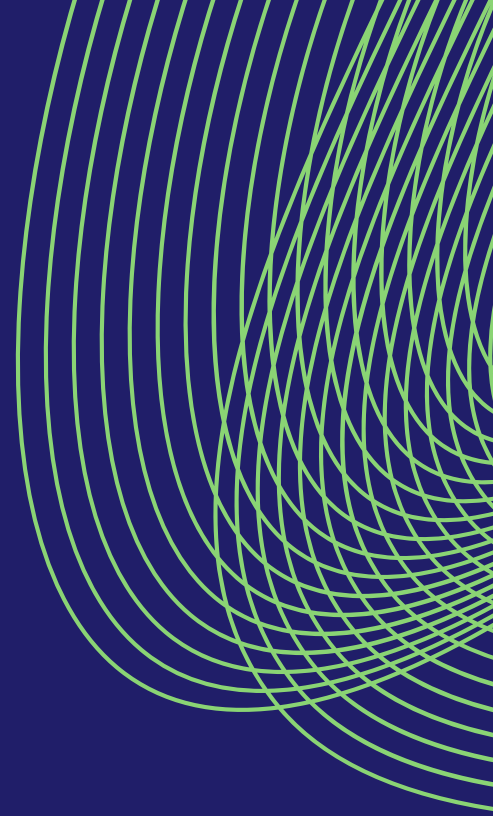
Driver Distraction Risks

Implementing screen blanking and dashcam technology is essential to minimize distractions for drivers. High risk levels associated with driver distraction necessitate the enforcement of safe driving policies. Such measures ensure that drivers remain focused on the road, thereby enhancing safety and reducing liability for the organization during operations.

Establishing strict guidelines for the use of in-vehicle technology is crucial. By promoting awareness and educating drivers on the implications of distracted driving, organizations can significantly reduce the potential for accidents. Regular training sessions coupled with technological solutions such as dashcams can create a safer driving environment and improve overall fleet performance.



GET IN TOUCH



**DEVICESOLUTIONS
NS.AI**

[https://www.devicesolutions.ai/
solutions@devicesolutions.ai](https://www.devicesolutions.ai/solutions@devicesolutions.ai)



406-964-6141